

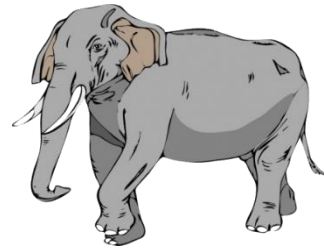
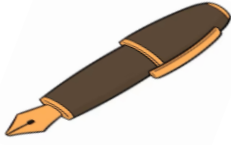
Name - \_\_\_\_\_

Start time - \_\_\_ : \_\_\_

End time - \_\_\_ : \_\_\_

Draw a line to match each picture on the left with its rhyming word on the right.

pen



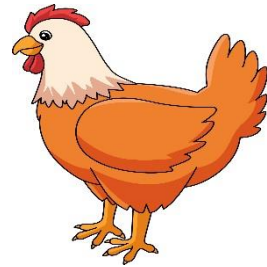
big

wig



box

rat



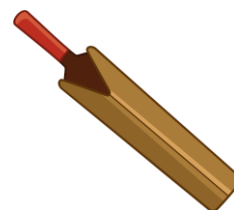
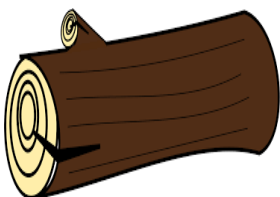
hen

fox



frog

log



bat

a b c d e f g h i j k l m n o p q r s t u v w x y z